



HEAVY LOADS HANDLED WITH EASE

POWERFUL. AGILE. RELIABLE.



HEAVY-DUTY FORKLIFT
SCP160G5

Lifting capacity
16 000 kg
Engine
CUMMINS QSB6.7
Emission standard
EU Stage V
Rated power
168 kW

HEAVY-DUTY FORKLIFT

- + Optimum weight distribution
- + Fast lifting speed
- + Powerful drive system
- + Reduced tire wear

Operating mass
23 000 kg
Max. lifting speed
450 mm/s
Max. travel speed
25 km/h



ENGINE

Model	CUMMINS QSB6.7
Rated power	168 kW / 2200 rpm
Emission standard	EU Stage V
Gearbox type	DANA 13.7FLTE14415
Torque	1 044 nm / 1 500 rpm

DIMENSIONS

Total length	8 144 mm
Transport width	2 640 mm
Transport height	3 438 mm
Load centre	1 200 mm
Wheel base	3 750 mm
Front overhang	1 044 mm
Rear overhang	910 mm
Min. ground clearance	300 mm
Seat height above ground	1 963 mm
Inner turning radius	685 mm
Outer turning radius	5 200 mm
Front tyre track width	1 898 mm
Rear tyre track width	2 089 mm

AXLES

Front axle	KESSLER-D81PL478
------------	------------------

TYRES

Tyre dimension	12.00-20
----------------	----------

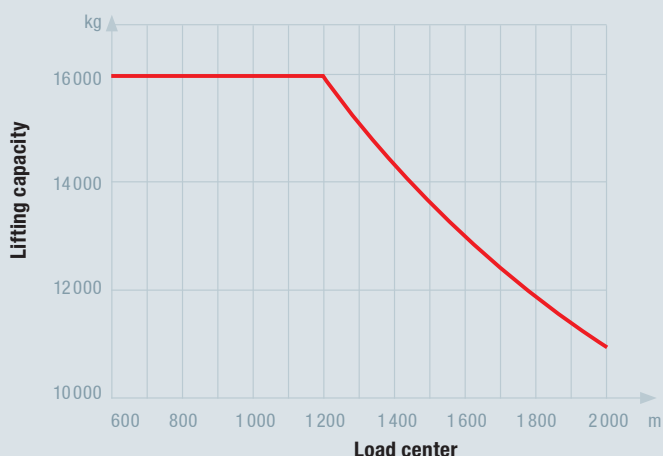
DRIVING AND LIFTING PERFORMANCE

Lifting capacity	16 000 kg
Lifting speed without / with load	450 / 400 mm/s
Lowering speed without / with load	500 / 500 mm/s
Gradeability without / with load	39 %
Lifting height	4 000 mm

FORKLIFT / MAST

Fork dimension (w x h x l)	200 x 100 x 2 440 mm
Fork distance (minimum / maximum)	674 / 2 274 mm
Mast height (retracted / extended)	3 754 / 5 704 mm
Mast tilt (forward / backwards)	15° / 12°

LOAD CHART



Not all products are available in all markets. As part of our continuous improvement process, we reserve the right to modify specifications and designs without giving prior notice. The figures may contain additional options.

